



learning center | CONNECT

*Deliver Microsoft e-Learning from your System
LMS - LMS Integration*

*Your advantages
with e-Learning*

*Learn whenever
you want*

*Learn with all
of your senses*

*Check your
learning progress
yourself*

*Repeat the contents
as often as you like*

*Learn through
practical examples*

Save money

What is Learning Center | Connect?

Learning center | Connect is aimed at customers who want to have the whole Microsoft e-Learning catalogue and access to this content integrated in their Learning Management System (LMS). Learning center | Connect contains the complete Microsoft e-Learning course catalogue (about 2000 courses) and enables tutorial support of learners and learning groups through LMS functions such as message boards and file sharing.

Who is Learning Center | Connect for?

■ Microsoft Learning Partners

Microsoft Learning partners (CPLS) and also all IT trainings suppliers who want to offer Microsoft e-Learning courses as an integrated part of their LMS.

■ Companies and Organisations

Large and medium-sized companies and public organisations using a companywide LMS and wanting to make the benefit of Microsoft e-Learning available to all of their employees.

Functionality

Microsoft e-Learning will be integrated into the customer's LMS using remote Web services.

Description of Web service Functions

■ General

- Web service will be provided which can be accessed using SOAP (WS-I)

- RPC provides an authentication process that identifies the server and client to each other. So no session needs to be setup. Each method has two additional security parameters. These require the username and password of the user to be entered in order for Web service calls to be made. As an additional security measure, the Web service must be called from a static IP address registered on our server.

■ Creating User Accounts

It is possible for the client to manage users i.e. create and register users. The following aspects of a user account can be controlled using the Web service:

- Login ID
- Password
- First Name
- Last Name

■ Course Catalogue

The course catalogue contains a list of learning objects. The list cannot be modified (read only). The following information is available:

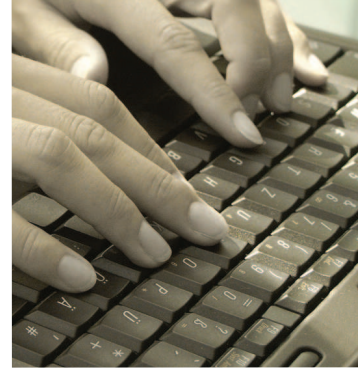
- Course Identifier (used to start the learning object and get statistical information for an user)
- Title
- Description

The course catalogue can be downloaded via an ordinary HTTP request and is an XML document.

■ Manage Subscriptions (Activations)

A newly created user account cannot start a learning object. An user account needs to be subscribed to a learning object in order to be able to begin it.

Facts about learning center | Connect



Deliver Microsoft e-Learning from your System LMS - LMS Integration

The subscription is date-based (you need to specify a starting date). It is possible to create assignments. Subscriptions last for one year.

- Login ID
- Course Identifier
- From
- To

■ Starting e-Learning Content

When starting the e-Learning content two pieces of information are necessary:

- Login ID
- Course Identifier

The return value of the Web service call will contain an URL that can be used to access the course. This function needs to be called at every start of the learning object. It is not possible to cache this value, as it contains a token to verify the request. The returned URL has a guaranteed validity of only 10 minutes, therefore a call to this Web service should take place immediately before the user wishes access to begin (e.g. the user clicks on the link to start the content, the Web service is then called and the user is redirected to the e-Learning content).

■ Runtime Data

It is possible to get runtime data for each individual user's e-Learning content. The Web service requires both a course identifier and a login ID. If either one of them is empty, all courses or users are returned.

The runtime data comprises:

- Course Identifier
- Login ID
- First start date
- Last start date
- How many times this was started
- Last Result
- Best Result

- Assessment Status: not attempted/
passed/failed
- Completion Status: incomplete/
completed

Pricing

- Setup fee € 999,-- (excl. VAT)
- Monthly usage fee € 199,-- (excl. VAT)
- Prices of e-Learning contents can be found on partner's purchase pricelist, which you will receive as a separate document.

Billing

- The setup fee is payable directly after signing of the ASP-contract.
- Monthly usage fee of the portal will be charged monthly and in advance together with the e-Learning contents.
- Bills for e-Learning contents are calculated using current price list. You receive a clear monthly booking report – that together with your purchase price, builds up the allocation base.

Contract Duration

- The ASP-contract will be concluded for 12 months and will be renewed automatically for another 12 months, unless terminated in written form 3 months before the expiry date.
- With the expiration of the contract all rights of use will expire, even if the usage of the MS e-Learning courses was primarily intended for different utilisation periods.

Contact

Mag. Helmuth Mai
Director International Sales
Microsoft e-Learning
bit Group

Kaerntner Straße 311
8054 Graz, Austria
Tel.: +43 1 / 729 69 50-21
Fax. : +43 1 / 729 69 50-50
Mob.: +43 664 / 61 99 624
helmuth.mai@bit.at

www.bit.at